

ClearView 3D

Powered by the 3DPro2501

► Precision Meets Protection

ClearView 3D is a laser scanning system for stockyard and stockpile management. With nano-film self-cleaning and dual dust protection, it delivers all-weather reliability. Real-time 3D visualization and 99.5% accuracy let you scan an entire yard in minutes and track materials instantly—fast, precise, and effortless.

► Engineered for Dusty Realities

- Breakthrough dual-layer protection: nano-coated film + rugged cover
- AI-powered self-cleaning keeps lenses clear, no manual upkeep
- Quick-swap cartridge design ensures continuous operation

► Unstoppable in Any Condition

- Triple defense against dust, water, and fog
- All-weather reliability for outdoor and indoor stockpiles

► Why ClearView 3D?

Because stockpile management demands more than numbers – it requires clarity and control.

Protect. Measure. Visualize.

► Inventory You Can Trust

- Up to 99.5% accuracy, even in high-dust environments
- Yard-wide scans completed in just 3 minutes

► See Your Stockpiles in 3D

- Real-time panoramic visualization
- Full oversight of sheds, domes, yards, and stockpiles at a glance

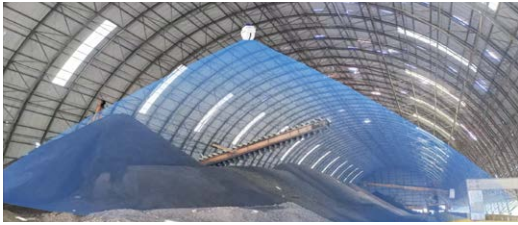
► Capture Every Volume

- Zone-based classification for smarter management
- Inbound/outbound tracking ensures total material transparency



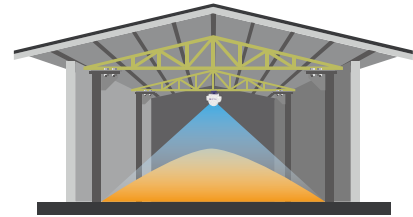
Large Stockyard Inventory:

Fast, precise 3D scanning for complete yard oversight.



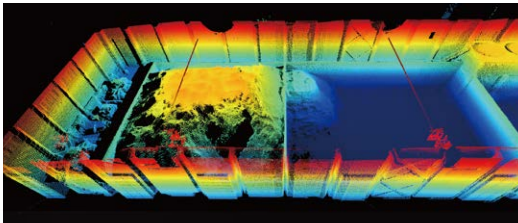
Intelligent Warehouse Management:

Automated stock tracking for smarter material control.



Unmanned Stockpile Measurement:

Safe, accurate monitoring without onsite personnel.



Automated Bucket Wheel Reclaimer:

Real-time volume tracking for continuous operations.



► **Technical Specifications**

Model	3DPro2501-200 3DPro2501-100
Application	Large stockyards, sheds, bulk material storage, unmanned yards
Range	1~210 m (10% reflectivity) 1~100 m (10% reflectivity)
Accuracy	±3cm (1σ)
Field of View	Horizontal: 360° / Vertical: 180°
Resolution	H: 0.05° / V: 0.09°
Laser Wavelength	905nm
Laser Class	Class1 eye-safe
Ingress Protection	IP67
Power Supply	220VAC/9~32VDC
Power Consumption	25W
Operating Temp.	-40°C~85°C
Weight	8.5kg
Data Interface	Ethernet / Wireless
Point Cloud Rate	7.2M points/sec
Volume Accuracy	≥99.5%FS